



**STAR TRADING AGENCIES**

**Est.1976**

STAR TRADING AGENCIES (STA) is an import and export trading / agent office established in Mauritius since 1976 by our current Director Mr Ahmed Mossodeea. Steel materials is our passion and business. We have been doing so for the past 46 years by bridging the gap between exporters and importers through the trust and relationship nurtured during all these years.

We have been supplying different kind of steel materials to the vast majority of steel merchants , building / civil engineering contractors in Mauritius and nearby Indian Ocean Islands. STA gives expert quality services to their customers such as sourcing , product development and quality control by cooperating with various suppliers worldwide with currently 60% of the business being conducted from South Africa , Turkey , China and UAE where we have partners office.

The aim of our company is to be " your efficient partner" in sourcing all your steel requirements worldwide.

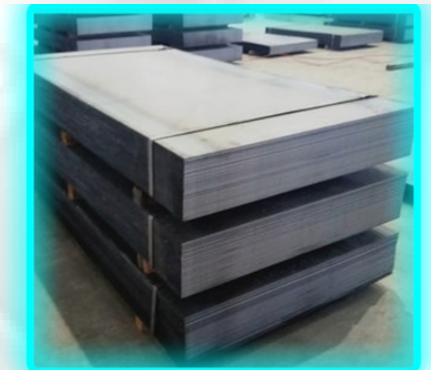
## FLAT PRODUCTS

### HOT ROLLED COILS AND SHEETS

**Thickness 1.5mm - 50mm**

**Length coil or 1500mm-5800mm**

**width 700mm-2000mm**



### COLD ROLLED COILS AND SHEETS

**Thickness 0.40mm-2mm**

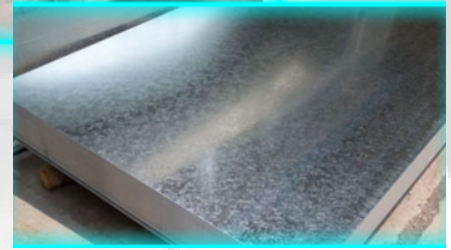
**Length coil or 1000mm-5800mm**

**width 700mm-1500mm**



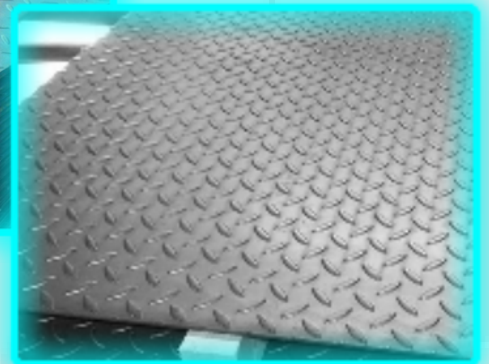
## GALVANISED COIL AND SHEETS

**Thickness** .20mm - 3mm  
**Length Coil or** 914mm-5800mm  
**Width** 900mm-1500mm



## CHEQUERED PLATES ( TEAR DROP / DIAMOND PATTERN)

**Thickness** 1.5mm -12mm  
**Sizes** 1000mm\*2400mm  
1200mm\*2400mm  
1219mm\*2438mm  
1250mm\*2500mm  
1500mm\*3000mm



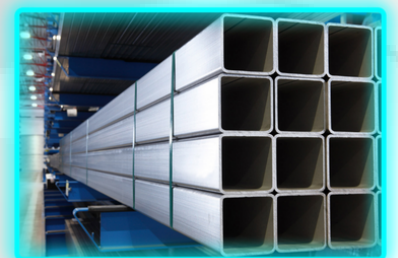
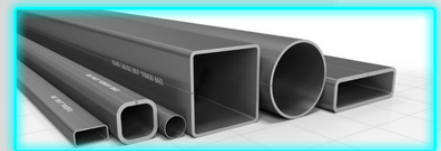
## Tubes and Pipes

**ERW Hollow sections**  
**Black , Hot dipped Galvanised & Pre-Galva**

**Size** 12mm\*12mm\*1.5mm - 200mm\*200mm\*10mm  
**Length** 6 Mtr - 5.8Mtr-5.5Mtr

**ERW Pipes - Water and Gas Pipes**

**Black and Galvanised steel pipes conforming to BS:1387**  
**Class : Light -Medium- Heavy.**  
**Plain End or screwed and socketed.**



# LONG PRODUCTS

## REINFORCING BARS

**Diameter 8-40mm**

**length 9Mtr-12Mtr**

**Standards BS 4449:2005 Grade 500B**



## WIRE RODS/DEBAR IN COILS

**Diameter 8MM-20MM**

**Standards BS**

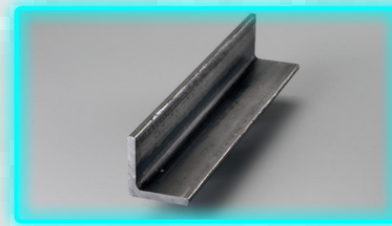


## MERCHANT BARS

### EQUAL ANGLES

**SIZE 20MM X 20MM X2MM UPTO 250MM X 250MM X 35MM**

**LENGTH 6-12MTR**



### SQUARE BARS

**SIZE 10MM X 10MM - 200MM X 200MM**

**LENGTH 6-12MTR**



### FLAT BARS

**SIZE 10MM X 3MM and Up depending on quantity**

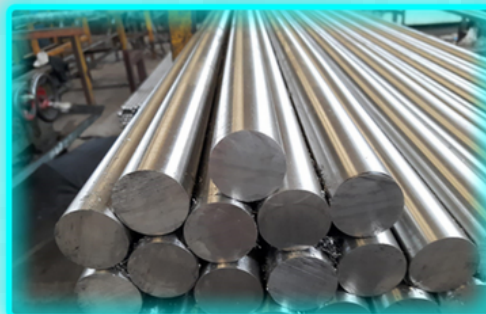
**LENGTH 6-12MTR**



### ROUND BARS

**SIZE 8MM AND UP**

**LENGTH 6-12MTR**



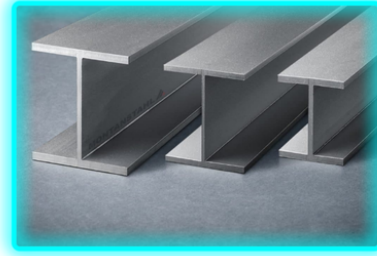


# PROFILES

IPN-IPE-IPE A - IPE AA - IPE AAA

**SIZE 80MM - 600MM**

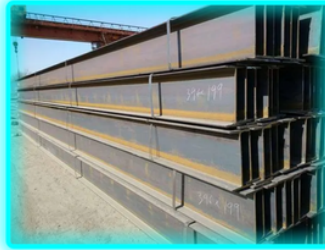
**LENGTH 6-12MTR**



HEA - HEB

**SIZE 120MM - 1000MM**

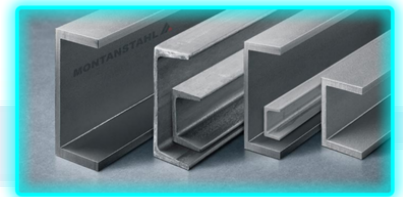
**LENGTH 6-12MTR**



UPN

**SIZE 75MM-300MM METRIC AND INCH SIZE AVAILABLE**

**LENGTH 6-12MTR**



# WIRES

GALVANISED WIRES

BLACK ANNEALED IRON WIRE

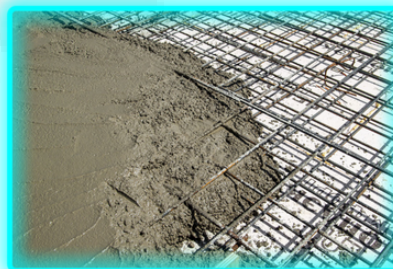
WIRE MESH

**Width of welded mesh panel 1Mtr-2.5mtr**

**Length of welded mesh panel 1Mtr -6mtr**

**Opening of Wire mesh 25mm -200mm**

**wire diameter 4mm - 11mm**



## CONTACT US

+230 212 6279 - 208 6543



+230 5 422 8120



@ startra@intnet.mu / startra03@gmail.com



@startra01



STAR TRADING AGENCIES

STAR HOUSE

17 CHURCH STREET PO BOX  
1162

PORT-LOUIS-MAURITIUS